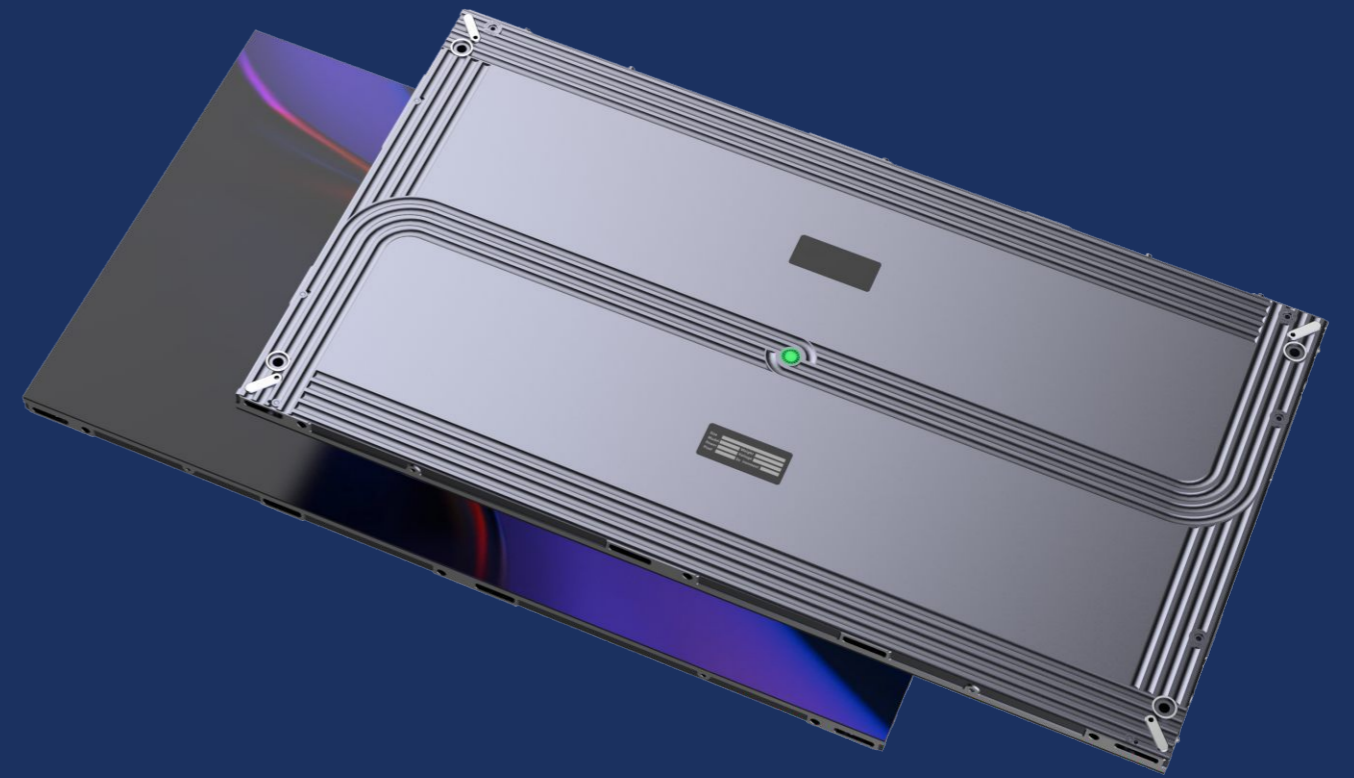




C.U.B.E
LED VIDEO WALL



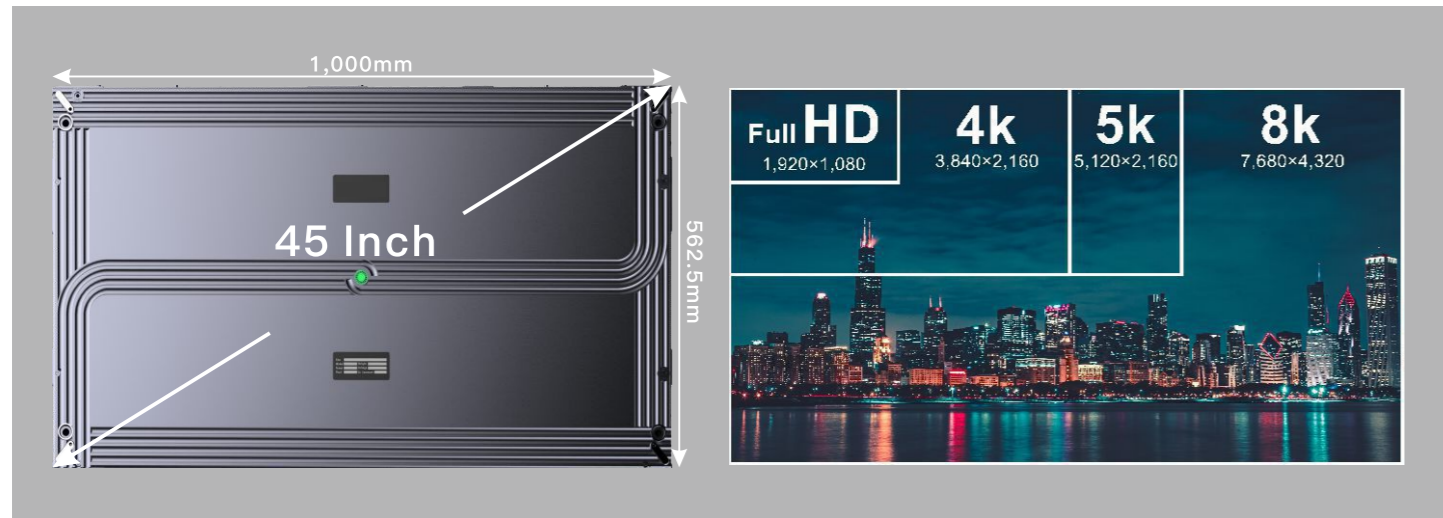
Tmax

New Chapter for LED Wall

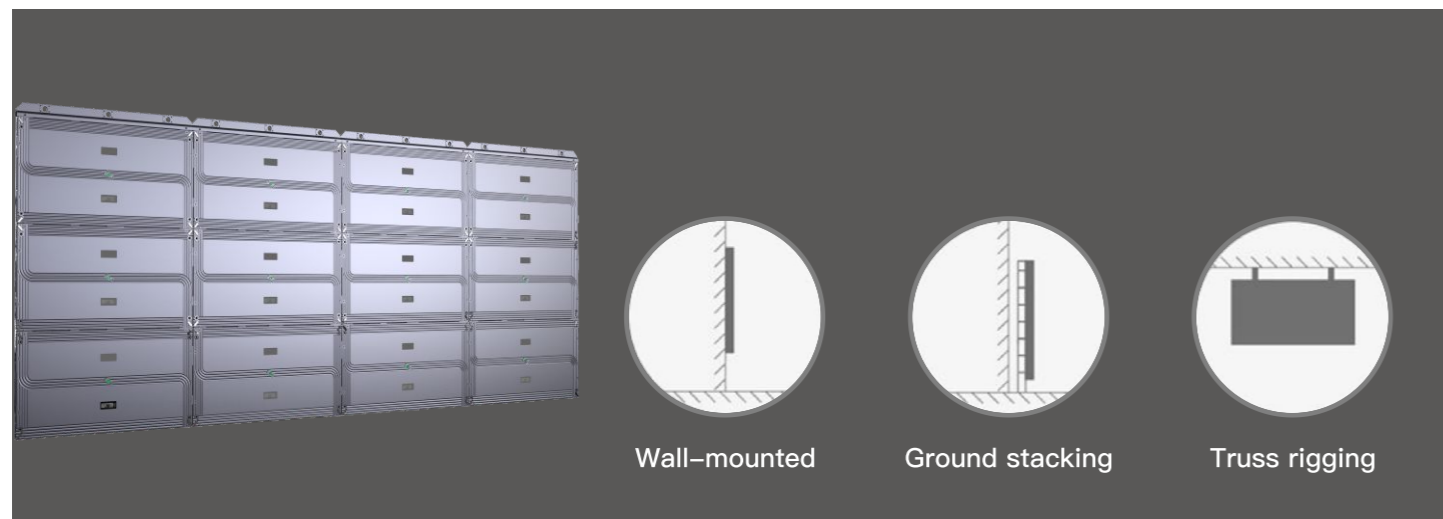
C.U.B.E
LED VIDEO WALL

1300 302 884
www.cubevideowalls.com
MELBOURNE – SYDNEY – BRISBANE – PERTH

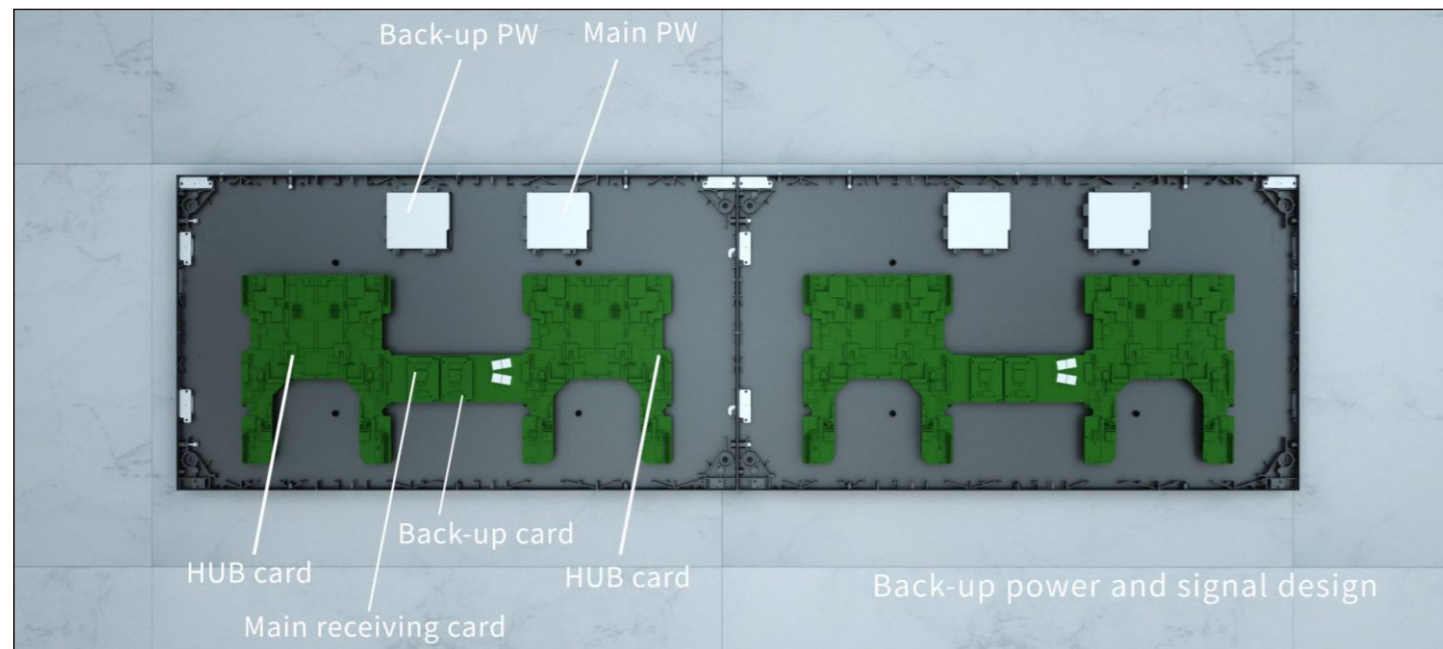
Golden Ratio=Golden Image



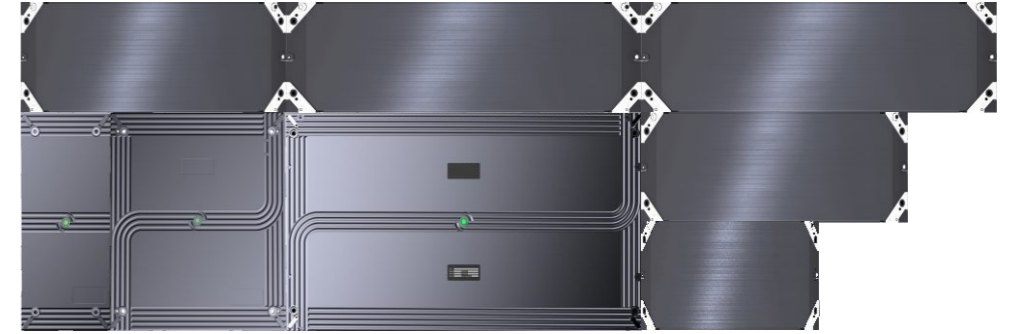
Flexible Installation



Power & Signal Redundancy



Cabinet sizes



Specifications

Model name	P1.5	P1.9	P2.6	P3.9
Pixel Pitch (mm)	1.5	1.9	2.6	3.9
Pixel Density (dot/m ²)	409,600	262,144	147,456	65,536
LED sealing Type	SMD1010	SMD1212/SMD1515	SMD2121	SMD2121
Module Resolution (PX* PX)	160*180	128*144	96*108	64*72
Module Size (mm * mm)	250*281.25	250*281.25	250*281.25	250*281.25
Module Weight (kg)	0.5	0.5	0.5	0.5
Module Thickness	3mm	3mm	3mm	3mm
Average Module Power Consumption (W)	35	28	30	32
Drive Mode:	Constant Current	Constant Current	Constant Current	Constant Current
Horizontal Viewing Angle (Deg)	160	160	160	160
Vertical Viewing Angle (Deg)	140	140	140	140
Brightness (cd/m ²)	600	800-1,000	800-1,000	800-1,000
Grey Scale (bit)	≥14	≥14	≥14	≥14
Refresh Rate (Hz)	3,840	3,840	3,840	3,840
Max Power consumption(W/m ²)	500	400	410	420
Average Power consumption (W/m ²)	200	160	170	170
Cabinet Size (mm * mm)	1,000*562.5mm 500*562.5mm 250*562.5mm 1,000*281.25mm 750*281.25mm 500*281.25mm	1,000*562.5mm 500*562.5mm 250*562.5mm 1,000*281.25mm 750*281.25mm 500*281.25mm	1,000*562.5mm 500*562.5mm 250*562.5mm 1,000*281.25mm 750*281.25mm 500*281.25mm	1,000*562.5mm 500*562.5mm 250*562.5mm 1,000*281.25mm 750*281.25mm 500*281.25mm
Cabinet Weight (Kg)	11.7kg	11.7kg	11.7kg	11.7kg
Cabinet Thickness(mm)	28.5	28.5	28.5	28.5
Input Voltage (V)	110-220V/200-240V	110-220V/200-240V	110-220V/200-240V	110-220V/200-240V
Working Temperature (°C)	-20~ +40	-20~ +40	-20~ +40	-20~ +40
Storage temperature range (°C)	-40~ +80	-40~ +80	-40~ +80	-40~ +80
Operation humidity (RH):	10%-90%	10%-90%	10%-90%	10%-90%
Waterproof Level	IP20	IP20	IP20	IP20
Working Environment:	Indoor	Indoor	Indoor	Indoor
Installation Method	Front service	Front service	Front service	Front service
Certificates:	CE, EMC, ETL, FCC	CE, EMC, ETL, FCC	CE, EMC, ETL, FCC	CE, EMC, ETL, FCC