

**C.U.B.E**  
LED VIDEO WALL

Diamond  
Series

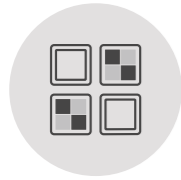


**C.U.B.E**  
LED VIDEO WALL

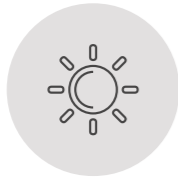
1300 302 884  
[www.cubevideowalls.com](http://www.cubevideowalls.com)  
MELBOURNE – SYDNEY – BRISBANE – PERTH

Fine pixel pitch product for outdoor installations.

## Key features



Fine pixel pitch



High brightness



IP65 waterproof



Easy maintenance



Universal module

## Excellent product performance



**4,000nits +**  
High Brightness



**3,840HZ+**  
High Refresh rate



**14Bit +**  
High gray scale



**IP65**  
High waterproof



**12,000: 1**  
High contrast ratio



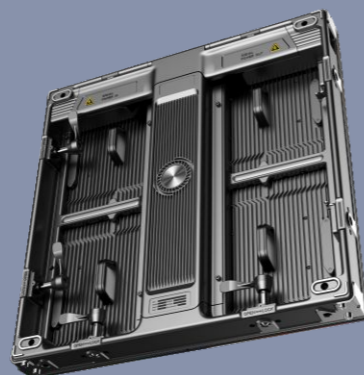
**160 degree**  
Wide viewing angle

## Superior structural design

Die-casting Aluminum module and cabinet,  
for seamless installation and fast heat radiation.



Both totally front and rear service,  
easy for installation.



Simple design with hidden cables.



Various installation way: Attached onto  
the wall, rigging, stacking.



## Lead outdoor DOOH market into fine pixel world!



Retail shop



Bus station



Chain restaurant



Museum

## Specifications

Model name	FAB-DM1.9	FAB-DM2.9
Pixel Pitch (mm)	1.95	2.97
Pixel Density (dot/m2)	262,144	112,896
LED sealing Type	SMD1212	SMD1515
Module Resolution (PX* PX)	128*128	84*84
Module Size (mm * mm)	250*250	250*250
Module Weight (kg)	1.1	0.9
Module Thicknees	15.4mm	20.7mm
Contrast Ratio	12,000:1	14,000:1
Drive Mode:	Constant Current	Constant Current
Horizontal Viewing Angle (Deg)	160	160
Vertical Viewing Angle (Deg)	160	140
Brightness (cd/m2)	3,000-4,000	4,500-5,300
Grey Scale (bit)	14-16	14-16
Refresh Rate (Hz)	3,840	3,840
Max Power Dissipation(W/m <sup>2</sup> )	560±3%	560±3%
Average Power consumption (W/m <sup>2</sup> )	168	168
Cabinet Size (mm * mm)	500*500	500*500
Cabinet Weight (Kg)	36KG/m <sup>2</sup>	34KG/m <sup>2</sup>
Cabinet Thickness(mm)	65	65
Input Voltage (V)	AC110-220V	AC110-220V
Working Temperature (°C)	-30~+50°C	-30~+50°C
Storage humidity (RH)	10%~95%	10%~95%
Working humidity (RH)	10%~95%	10%~95%
Waterproof Level	IP65/IP65	IP65/IP65
Working Environment:	Outdoor	Outdoor
Installtion Method	Front/Rear	Front/Rear
Certificates:	CE, ETL, FCC, EMC, PSE	CE, ETL, FCC, EMC, PSE